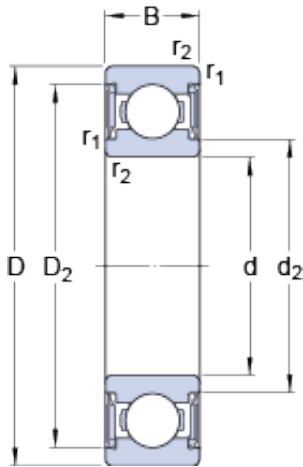




NTN-SNR BEARING RULMENTI S.R.L.



7 mm x 19 mm x 6 mm skf W 607-2RS1 Deep groove ball bearings

Bearing No. W 607-2RS1

W 607-2RS1 Bearing 2D drawings and 3D CAD models

Size	19x7x6 mm
Bore Diameter	19 mm
Outer Diameter	7 mm
Width	6 mm
d	7 mm
D	19 mm
B	6 mm
d ₂	9 mm
D ₂	16.5 mm
r _{1,2} - min.	0.3 mm
d _a - min.	8.7 mm
d _a - max.	8.9 mm
D _a - max.	17 mm
r _a - max.	0.3 mm
Basic dynamic load rating - C	1.5 kN
Basic static load rating - C ₀	0.585 kN
Fatigue load limit - P _u	0.025 kN
Limiting speed	24000 r/min
Calculation factor - k _r	0.03
Calculation factor - f ₀	7.9
Category	Single Row Ball Bearings
Inventory	0.0
Manufacturer Name	SKF
Minimum Buy Quantity	N/A



NTN-SNR BEARING RULMENTI S.R.L.

Weight / Kilogram	0.007
Product Group	B00308
Enclosure	2 Seals
Precision Class	ABEC 1 ISO P0
Maximum Capacity / Filling Slot	No
Rolling Element	Ball Bearing
Snap Ring	No
Internal Special Features	No
Cage Material	Stainless Steel
Enclosure Type	Contact Seal
Internal Clearance	C0-Medium
Inch - Metric	Metric
Long Description	7MM Bore; 19MM Outside Diameter; 6MM Outer Race Width; 2 Seals; Ball Bearing; ABEC 1 ISO P0; No Filling Slot; No Snap Ring; No Internal Special Features; C0-Medium Internal Clearance; Stainless Steel
Other Features	Deep Groove NBR Seal
Category	Single Row Ball Bearing
UNSPSC	31171504
Harmonized Tariff Code	8482.10.50.68
Noun	Bearing
Keyword String	Ball
Manufacturer URL	http://www.skf.com
Manufacturer Item Number	W 607-2RS1
Weight / LBS	0.02
Outer Race Width	0.236 Inch 6 Millimeter
Inner Race Width	0 Inch 0 Millimeter
Bore	0.276 Inch 7 Millimeter
Outside Diameter	0.748 Inch 19 Millimeter
d ₂	9 mm



NTN-SNR BEARING RULMENTI S.R.L.

D_2	16.5 mm
$r_{1,2}$ min.	0.3 mm
d_a min.	8.7 mm
d_a max.	8.9 mm
D_a max.	17 mm
r_a max.	0.3 mm
Basic dynamic load rating C	1.53 kN
Basic static load rating C_0	0.585 kN
Fatigue load limit P_u	0.025 kN
Calculation factor k_r	0.03
Calculation factor f_0	7.9
Mass bearing	0.0072 kg