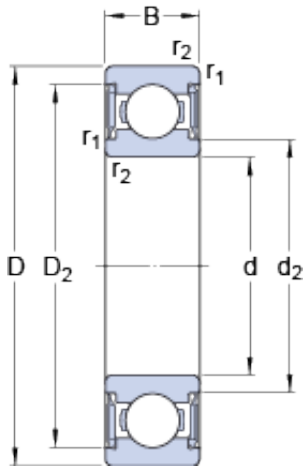




NTN-SNR BEARING RULMENTI S.R.L.



15 mm x 24 mm x 7 mm skf W 63802-2RS1
Deep groove ball bearings

Bearing No. W 63802-2RS1

W 63802-2RS1 Bearing 2D drawings and 3D CAD models

Size	24x15x7 mm
Bore Diameter	24 mm
Outer Diameter	15 mm
Width	7 mm
d	15 mm
D	24 mm
B	7 mm
d ₂	16.8 mm
D ₂	22.15 mm
r _{1,2} - min.	0.3 mm
d _a - min.	16.5 mm
d _a - max.	16.5 mm
D _a - max.	22.5 mm
r _a - max.	0.3 mm
Basic dynamic load rating - C	1.6 kN
Basic static load rating - C ₀	1.1 kN
Fatigue load limit - P _u	0.048 kN
Limiting speed	17000 r/min
Calculation factor - k _r	0.02
Calculation factor - f ₀	13.8
d ₂	16.8 mm
D ₂	22.15 mm
r _{1,2} min.	0.3 mm
d _a min.	16.5 mm



NTN-SNR BEARING RULMENTI S.R.L.

d_a max.	16.5 mm
D_a max.	22.5 mm
r_a max.	0.3 mm
Basic dynamic load rating C	1.65 kN
Basic static load rating C_0	1.08 kN
Fatigue load limit P_u	0.048 kN
Calculation factor k_r	0.02
Calculation factor f_0	13.8
Mass bearing	0.0098 kg