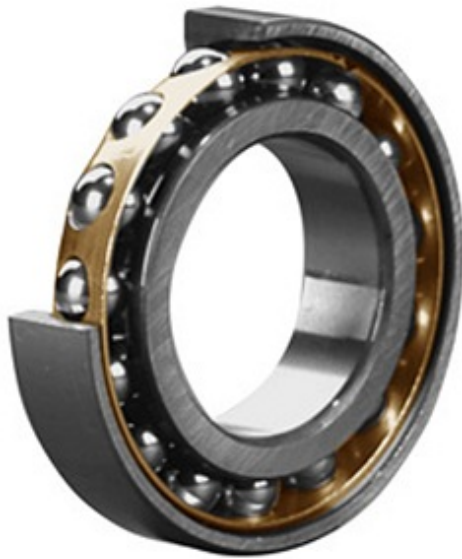




NTN-SNR BEARING RULMENTI S.R.L.



7322 BEGAM Bearing 2D drawings and 3D CAD models

110 mm x 240 mm x 50 mm skf 7322 BEGAM
Single row angular contact ball bearings

Bearing No. 7322 BEGAM

Category	Angular Contact Ball Bearings
Inventory	0.0
Manufacturer Name	SKF
Minimum Buy Quantity	N/A
Weight	10.967
EAN	7316577610584
Product Group	B00308
Enclosure	Open
Flush Ground	Yes
Rolling Element	Ball Bearing
Number of Rows of Balls	Single Row
Precision Class	ABEC 1 ISO P0
Maximum Capacity / Filling Slot	No
Snap Ring	No
Cage Material	Brass
Contact Angle	40 Degree
Internal Clearance	C0-Medium
Number of Bearings	1 (Single)
Preload	Light
Mounting Arrangement	Universal
Inch - Metric	Metric
Long Description	110MM Bore; 240MM Outside Diameter; 50MM Width; Open; Yes Flush Ground; Ball Bearing; Single



NTN-SNR BEARING RULMENTI S.R.L.

	Row of Balls; ABEC 1 ISO P0; No Filling Slot; No Snap Ring; C0-Medium; Brass Cage; 40 Degree; 1 (Single);
Category	Angular Contact Ball Bearing
UNSPSC	31171531
Harmonized Tariff Code	8482.10.50.28
Noun	Bearing
Keyword String	Angular Contact
Manufacturer URL	http://www.skf.com
Manufacturer Item Number	7322 BEGAM
d	4.331 Inch 110 Millimeter
B	1.969 Inch 50 Millimeter
D	9.449 Inch 240 Millimeter
bore diameter:	110 mm
radial static load capacity:	245 kN
outside diameter:	240 mm
cage material:	Brass
overall width:	50 mm
outer ring width:	50 mm
contact angle:	40 °
maximum rpm:	3600 RPM
row type & fill slot:	Single-Row Non-Fill Slot
finish/coating:	Uncoated
internal clearance:	C0
precision rating:	ABEC 3 (ISO Class 6)
closure type:	Open
fillet radius:	2.5 mm
radial dynamic load capacity:	240 kN
series:	73
d	110 mm
D	240 mm



NTN-SNR BEARING RULMENTI S.R.L.

B	50 mm
d_1	160.8 mm
d_2	134.98 mm
D_1	193.5 mm
a	99 mm
$r_{1,2}$ min.	3 mm
$r_{3,4}$ min.	1.1 mm
d_a min.	124 mm
D_a max.	226 mm
D_b max.	233 mm
r_a max.	2.5 mm
r_b max.	1 mm
Basic dynamic load rating C	240 kN
Basic static load rating C_0	245 kN
Fatigue load limit P_u	7.8 kN
Reference speed	3400 r/min
Limiting speed	4500 r/min
Calculation factor A	0.906
Calculation factor k_r	0.1
Calculation factor e	1.14
Calculation factor X	0.35
Calculation factor Y_0	0.26
Calculation factor Y_2	0.57
Calculation factor X	0.57
Calculation factor Y_0	0.52
Calculation factor Y_1	0.55
Calculation factor Y_2	0.93
Mass bearing	10 kg