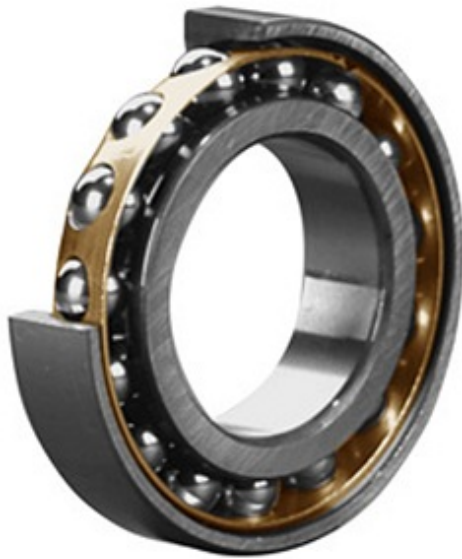




NTN-SNR BEARING RULMENTI S.R.L.



7312 BEM Bearing 2D drawings and 3D CAD models

60 mm x 130 mm x 31 mm skf 7312 BEM Single row angular contact ball bearings

Bearing No. 7312 BEM

Category	Angular Contact Ball Bearings
Inventory	0.0
Manufacturer Name	SKF
Minimum Buy Quantity	N/A
Weight	1.9
Product Group	B00308
Enclosure	Open
Flush Ground	No
Rolling Element	Ball Bearing
Number of Rows of Balls	Single Row
Precision Class	ABEC 3 ISO P6
Maximum Capacity / Filling Slot	No
Snap Ring	No
Cage Material	Brass
Contact Angle	40 Degree
Internal Clearance	C0-Medium
Number of Bearings	1 (Single)
Inch - Metric	Metric
Long Description	60MM Bore; 130MM Outside Diameter; 31MM Width; Open; No Flush Ground; Ball Bearing; Single Row of Balls; ABEC 3 ISO P6; No Filling Slot; No Snap Ring
Category	Angular Contact Ball



NTN-SNR BEARING RULMENTI S.R.L.

	Bearing
UNSPSC	31171531
Harmonized Tariff Code	8482.10.50.28
Noun	Bearing
Keyword String	Angular Contact
Manufacturer URL	http://www.skf.com
Manufacturer Item Number	7312 BEM
Weight / LBS	4.187
D	5.118 Inch 130 Millimeter
B	1.22 Inch 31 Millimeter
d	2.362 Inch 60 Millimeter
d	60 mm
D	130 mm
B	31 mm
d ₁	87.25 mm
d ₂	72.6 mm
D ₁	104.8 mm
a	55 mm
r _{1,2} min.	2.1 mm
r _{3,4} min.	1.1 mm
d _a min.	72 mm
D _a max.	118 mm
D _b max.	123 mm
r _a max.	2 mm
r _b max.	1 mm
Basic dynamic load rating C	95.6 kN
Basic static load rating C ₀	69.5 kN
Fatigue load limit P _u	3 kN
Reference speed	6300 r/min
Limiting speed	6300 r/min
Calculation factor A	0.0846
Calculation factor k _r	0.1



NTN-SNR BEARING RULMENTI S.R.L.

Calculation factor e	1.14
Calculation factor X	0.35
Calculation factor Y_0	0.26
Calculation factor Y_2	0.57
Calculation factor X	0.57
Calculation factor Y_0	0.52
Calculation factor Y_1	0.55
Calculation factor Y_2	0.93
Mass bearing	1.75 kg